

Annie's  
Attic

CROCHET

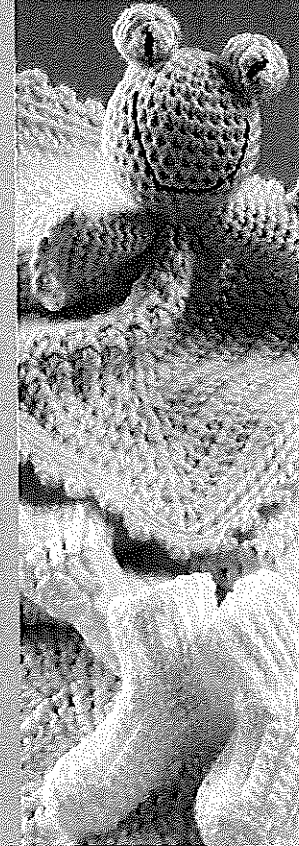
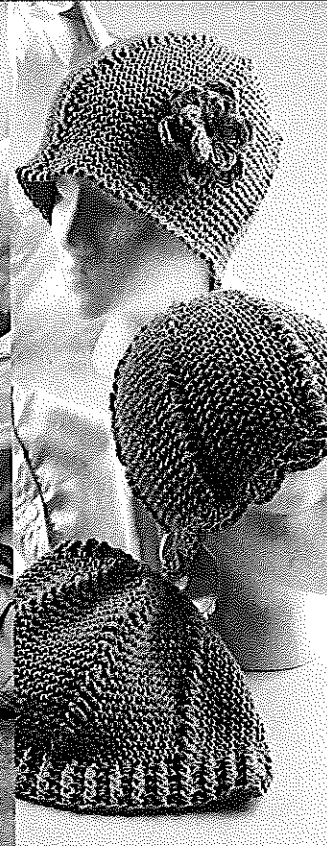
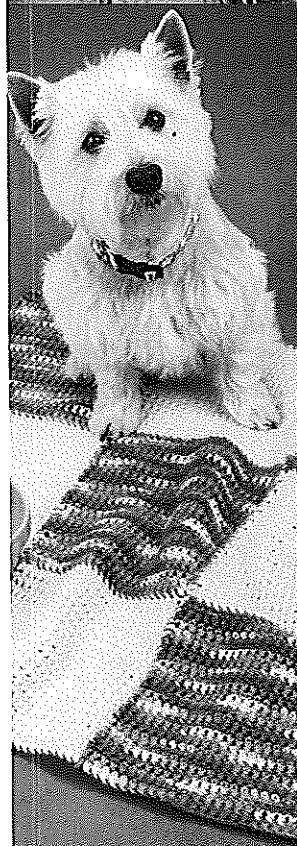
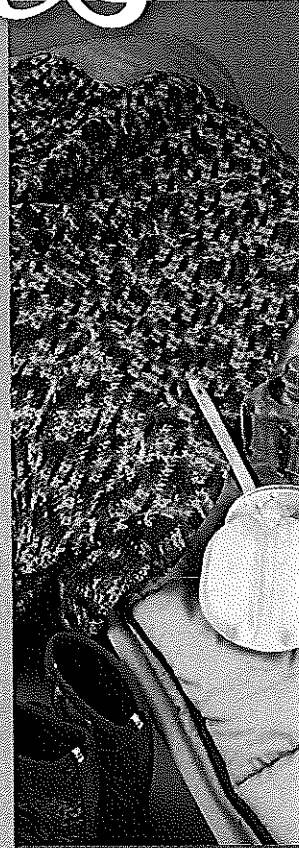
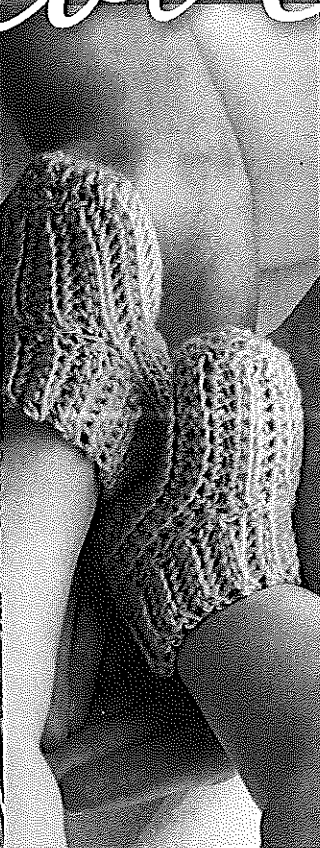
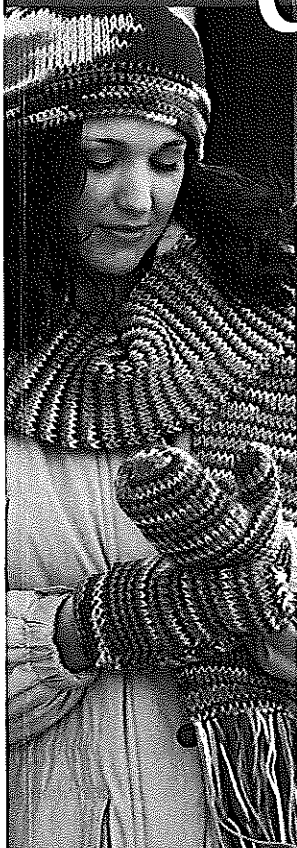
# Love stitches™

for  
someone  
you love  
or someone  
in need!

Create  
any of these

44

projects  
to show  
how much  
you care!



# Stars & Stripes

DESIGN BY BARBARA ROY

## SKILL LEVEL



EASY

## FINISHED SIZE

45 x 61 inches

## MATERIALS

- Red Heart Super Saver medium (worsted) weight yarn (7 oz./364 yds/198g per skein):
  - 3 skeins each #319 cherry red and #311 white
  - 2 skeins #387 soft navy
- Size F/5/3.75mm crochet hook or size needed to obtain gauge
- Tapestry needle



## GAUGE

16 sc = 4½ inches; 4 sc rows = 1 inch

## PATTERN NOTE

Join with slip stitch as indicated unless otherwise stated.

## INSTRUCTIONS

### AFGHAN

### PANEL

### MAKE 5.

**Row 1 (RS):** With cherry red, ch 182, sc in 2nd ch from hook and in each ch across, turn. (181 sc)

**Row 2:** Ch 1, sc in each sc across, turn.

**Rows 3–6:** Ch 1, sc in each sc across, turn. At the end of last row, fasten off.

**Row 7:** Join white with sc in first sc, sc in each sc across, turn.

**Rows 8–12:** Ch 1, sc in each sc across, turn. At the end of last row, fasten off.

**Row 13:** Join cherry red with sc in first sc, sc in each sc across, turn.

**Rows 14–18:** Ch 1, sc in each sc across, turn. At the end of last row, fasten off.

**Rows 19–30:** Rep rows 7–18. At end of last row, fasten off. (181 sc)

## PANEL EDGING

**Rnd 1:** With RS facing, join soft navy with sc in last st of row 30, sc in each st across to last st, 3 sc in last st, sc in end of each row across, working in starting ch on opposite side of row 1, 3 sc in first ch, sc in each ch across with 3 sc in last ch, sc in end of each row across to first st of row 30, 2 sc in same st as beg sc, join (see *Pattern Notes*) in beg sc, do not turn.

**Rnd 2:** Ch 1, sc in each sc around outer edge of Panel, working 3 sc in center st of each corner, join in beg sc. Fasten off.

## PANEL POINT

### MAKE 1 ON EACH END OF EACH PANEL.

**Row 1:** With RS facing, working on end of Panel in back lps (see *Stitch Guide*) for this row only, join soft navy with sc in center sc of 3-sc group, sc in each of next 33 sc, turn. (34 sc)

**Rows 2–16:** Ch 1, sc dec (see *Stitch Guide*) in first 2 sc, sc in each sc across to last 2 sts, sc dec in last 2 sts, turn. (4 sc)

**Row 17:** Ch 1, sc in each of first 2 sc, sc dec in last 2 sc, turn. (3 sc)

**Row 18:** Ch 1, sc in first st, sc dec in last 2 sts, turn. (2 sc)

**Row 19:** Ch 1, sc dec in next 2 sts. Fasten off. (1 sc)





## STAR

### MAKE 10.

**Rnd 1:** With white, ch 2, 10 sc in 2nd ch from hook, join in beg sc. (10 sc)

**Rnd 2:** Ch 1, sc in first sc, 2 sc in next sc, [sc in next sc, 2 sc in next sc] around, join in beg sc. (15 sc)

**Rnd 3:** [Ch 6, sl st in 2nd ch from hook, sc in next ch, hdc in next ch, dc in each of next 2 chs, sk next 2 sc of rnd 2, sl st in next sc of rnd 2] 5 times, leaving long end, fasten off. (5 points)

Sew 1 Star centered to rows 2–16 of each Panel Point.

## ASSEMBLY

With long end of soft navy, leaving all Panel Points unsewn, sew sides of Panels tog side by side.

## AFGHAN EDGING

**Rnd 1:** With RS facing, join soft navy with sc in any st on outer edge, sc around outer edge, working 3 sc in each st of each outer point and at each corner, sk 2 center sts between each inner point to form indent, join in beg sc, **do not turn.**

**Rnd 2:** Ch 1, sc in each sc around, working 3 sc in each st of each outer point and at each corner, sk 2 center sts between each inner point to form indent, join in beg sc, **do not turn.**

**Rnd 3:** Sl st in each st around. Fasten off. ■